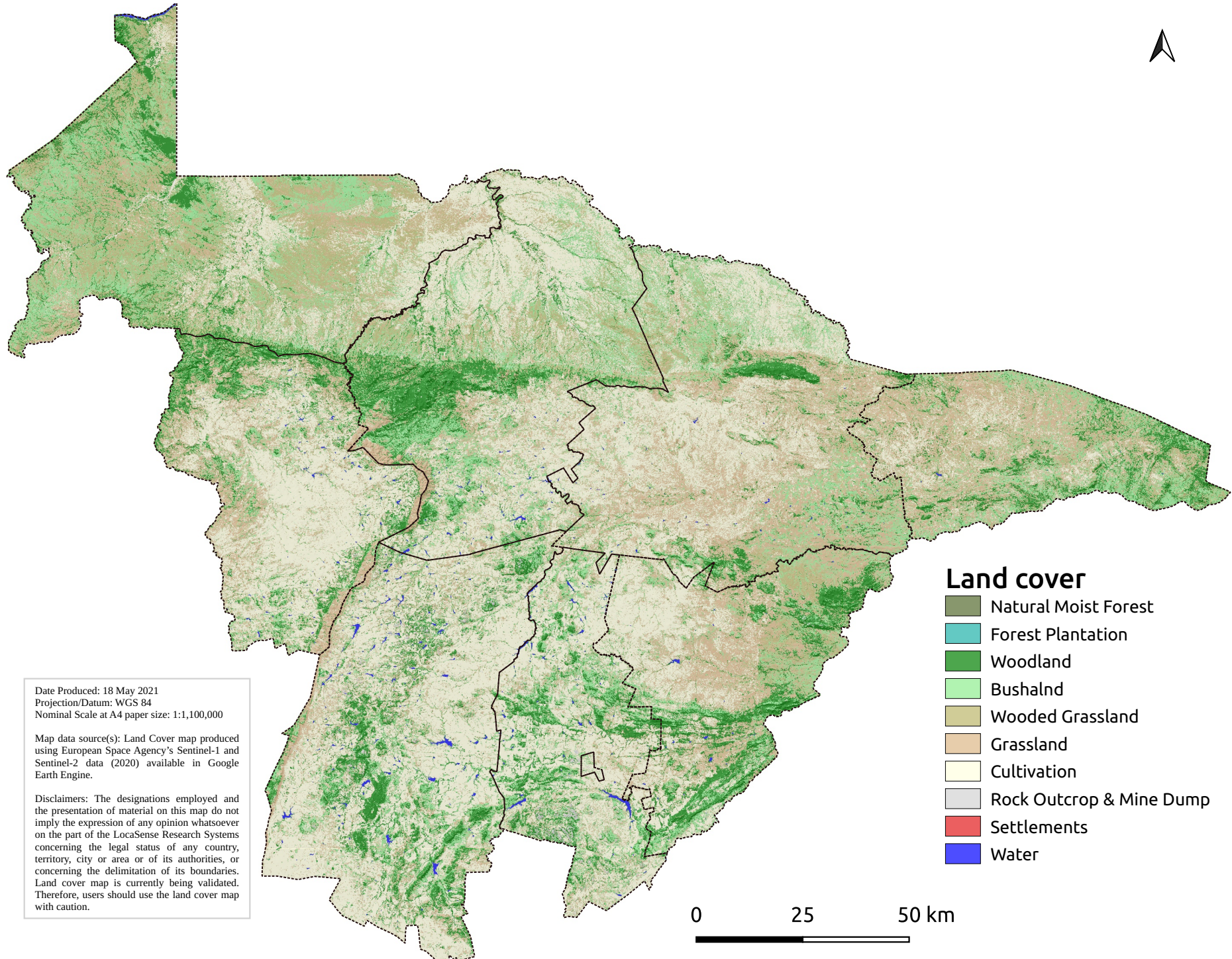


# Mashonaland Central Province



Date Produced: 18 May 2021  
Projection/Datum: WGS 84  
Nominal Scale at A4 paper size: 1:1,100,000

Map data source(s): Land Cover map produced using European Space Agency's Sentinel-1 and Sentinel-2 data (2020) available in Google Earth Engine.

Disclaimers: The designations employed and the presentation of material on this map do not imply the expression of any opinion whatsoever on the part of the LocaSense Research Systems concerning the legal status of any country, territory, city or area or of its authorities, or concerning the delimitation of its boundaries. Land cover map is currently being validated. Therefore, users should use the land cover map with caution.

## Land cover

- Natural Moist Forest
- Forest Plantation
- Woodland
- Bushland
- Wooded Grassland
- Grassland
- Cultivation
- Rock Outcrop & Mine Dump
- Settlements
- Water

0 25 50 km